

"Stay Connected" with



HEYware Products

a PennEngineering® Company

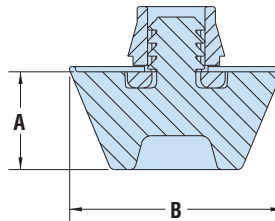


## Heyco® Feet of Strength Feet with Snap-In Locking Fingers

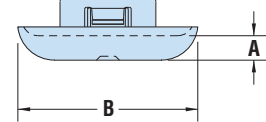
- **Snap-in design** eliminates the installation labor needed for a screw or a rivet saving assembly time and equipment.
- Superior mounting approach as the Snap-In Bumper mounts securely into the panel while providing a strong mechanical support to the bumper when used as a mounting foot for electronic enclosures.
- Superior hold versus adhesive backed or screw/rivet bumpers.
- Designed to fit snugly into panel and is dust tight.
- Snap-In Bumpers are skid and scratch resistant and will not mark or stain surfaces.
- Lock firmly into enclosure.
- Quick and easy installation.
- Suitable for metal or plastic panels.
- Bumper constructed of EPDM rubber.
- Part Description Key: FSSI XX-YY-ZZ where XX = Overall Height (inches), YY = Mounting Hole Diameter (inches) and ZZ = Maximum Panel Thickness (inches)

| PART DIMENSIONS    |     |                |      | PANEL DIMENSIONS       |                 |     |     | PART NO. Black | DESCRIPTION |              |               |
|--------------------|-----|----------------|------|------------------------|-----------------|-----|-----|----------------|-------------|--------------|---------------|
| A Overall Height   |     | B Top Diameter |      | Mounting Hole Diameter | Thickness Range |     |     |                |             |              |               |
| in.                | mm. | in.            | mm.  |                        | in.             | mm. |     | in.            | mm.         |              |               |
| <b>FSSI Series</b> |     |                |      |                        |                 |     |     |                |             |              |               |
| .19                | 4,7 | .812           | 20,6 | .312                   | 7,9             | .03 | 0,8 | .06            | 1,6         | <b>G3016</b> | FSSI 19-31-06 |
| .25                | 6,3 | .812           | 20,6 | .312                   | 7,9             | .03 | 0,8 | .06            | 1,6         | <b>G3017</b> | FSSI 25-31-06 |
| .38                | 9,5 | .812           | 20,6 | .312                   | 7,9             | .03 | 0,8 | .06            | 1,6         | <b>G3018</b> | FSSI 38-31-06 |

Standard color black.



Snap-In



Low Profile Snap-In

## Low Profile Feet with Snap-In Locking Fingers

- **The low profile snap-in design** requires no screws or adhesives to securely mount into a metal or plastic base.
- The TPE top provides a durable, non-skid surface.
- Snap-In Feet ensure a liquid tight seal and can be used for indoor or outdoor applications.
- Part Description Key: LTBP XXX-YYY where XXX = Mounting Hole Diameter (inches) and YYY = Maximum Panel Thickness (inches)



| PART DIMENSIONS    |      |                |      | PANEL DIMENSIONS       |                 |     |     | PART NO. Black | DESCRIPTION   |              |               |
|--------------------|------|----------------|------|------------------------|-----------------|-----|-----|----------------|---------------|--------------|---------------|
| A Overall Height   |      | B Top Diameter |      | Mounting Hole Diameter | Thickness Range |     |     |                |               |              |               |
| in.                | mm.  | in.            | mm.  |                        | in.             | mm. |     | in.            | mm.           |              |               |
| <b>LTBP Series</b> |      |                |      |                        |                 |     |     |                |               |              |               |
| .13                | 3,2  | .55            | 14,0 | .500                   | 12,7            | .02 | 0,5 | .06            | 1,6           | <b>C2008</b> | LTBP 500-063  |
|                    |      |                |      |                        |                 | .06 | 1,6 | .25            | 6,4           | <b>C2058</b> | LTBP 500-250  |
|                    |      | .66            | 16,8 | .625                   | 15,9            | .02 | 0,5 | .06            | 1,6           | <b>C2012</b> | LTBP 625-063  |
|                    |      |                |      |                        |                 | .06 | 1,6 | .25            | 6,4           | <b>C2062</b> | LTBP 625-250  |
|                    |      | .78            | 19,8 | .750                   | 19,1            | .02 | 0,5 | .06            | 1,6           | <b>C2016</b> | LTBP 750-063  |
|                    |      |                |      |                        |                 | .06 | 1,6 | .25            | 6,4           | <b>C2066</b> | LTBP 750-250  |
|                    |      | .90            | 22,9 | .875                   | 22,2            | .02 | 0,5 | .06            | 1,6           | <b>C2020</b> | LTBP 875-063  |
|                    |      |                |      |                        |                 | .06 | 1,6 | .25            | 6,4           | <b>C2070</b> | LTBP 875-250  |
|                    |      | 1.05           | 26,7 | 1.000                  | 25,4            | .02 | 0,5 | .06            | 1,6           | <b>C2022</b> | LTBP 1000-063 |
|                    |      |                |      |                        |                 | .06 | 1,6 | .25            | 6,4           | <b>C2072</b> | LTBP 1000-250 |
| 1.16               | 29,5 | 1.093          | 27,8 | .02                    | 0,5             | .06 | 1,6 | <b>C2024</b>   | LTBP 1093-063 |              |               |
|                    |      |                |      | .06                    | 1,6             | .25 | 6,4 | <b>C2074</b>   | LTBP 1093-250 |              |               |

Standard color black.

Quick Specs

Material

**FSSI Series:** EPDM Rubber insert, Nylon 6/6 body

Flammability Rating

**LTBP Series:** Nylon 6/6 and TPE co-molding

Temperature Range

HB

-40°F (-40°C) to 221°F (105°C)

IP Rating

IP 67/68 (LTBP only)